

Rep Lauren Boebert Rails Against Sage Grouse Protections That Would Limit Oil And Gas Activity For Husband's Employer

SUMMARY: In early February 2022, Colorado Rep. Lauren Boebert went on a tirade against sage grouse, attacking the Bureau of Land Management (BLM) upcoming changes to sage grouse management in the US.

In Colorado, sage grouse populations and priority areas for conservation are concentrated in the northwest – the same area where the oil and gas company Rep. Boebert's husband works for has extensive operations.

Jayson Boebert has worked with Terra Energy Partners, owner of TEP Rocky Mountain, since 2017, getting close to \$1 million for the company over just two years. Terra Energy has "extensive" lease holdings in Garfield and Rio Blanco Counties in northwest Colorado, exactly where the BLM is looking to add sage grouse protections.

Of Terra Energy's leases and wells in northwest Colorado, around 120 of them are located in between the towns of Parachute, Rangley, and Meeker. Terra Energy's leases here surround priority sage grouse conservation areas and overlap with sage grouse habitats. Meaning more protections for sage grouse in northwest Colorado could hurt Terra's bottom line.

The Bureau Of Land Management Is Considering Changes To Sage Grouse Habitat Protections In Northwestern Colorado

On February 8, 2022, Rep. Lauren Boebert Went On A Tirade Against Sage Grouse And The Bureau Of Land Management's Updated Sage Grouse Management Plan.

The Bureau Of Land Management Is In The Process Of Amending Its Resource Management Plan To Protect Sage Grouse. "In order to protect the long-term health of Greater sage-grouse populations, consider new science and comply with court direction, the BLM is beginning to consider updates to the range-wide management plans for sagebrush habitat adopted in 2015 and amended in 2019. More than 70 resource management plans currently guide habitat conservation and restoration on 67 million acres of Greater sage-grouse habitat the bureau manages in 10 Western states." [BLM, DOI-BLM-WO-2300-2022-0001-RMP-EIS, [02/03/22](#)]

Initial Comments On The BLM's Resource Management Plan Were Due By February 7, 2022. "The BLM announced in November its intent to amend the plan and prepare a new Environmental Impact Statement. Initial comments as part of that process are due by Feb. 7." [*Post Independent*, [12/13/21](#)]

Rep Lauren Boebert Called Sage Grouse A "Mediocre Bird" And Attacked The Biden Administration's Updated Sage Grouse Management Plans As A "Land Grab." "The Biden regime's sage-grouse landgrab policies are not about saving a mediocre bird that is legally hunted in 7 states, rather, they are about locking up tens of millions of acres of land in the West, closing off mineral and energy development, expanding the federal government's power over rural Colorado, and destroying American jobs." [Rep Lauren Boebert, [02/08/22](#)]

The Bureau Of Land Management's Greater Sage Grouse Environmental Impact Statement Planning Area In Northwest Colorado Includes Garfield And Rio Blanco Counties.

The Entirety Of Garfield And Rio Blanco Counties Are Included In BLM's Northwest Colorado Greater Sage Grouse Environmental Impact Statement Planning Area Boundaries.

**Figure I-1
Northwest Colorado Planning Area**

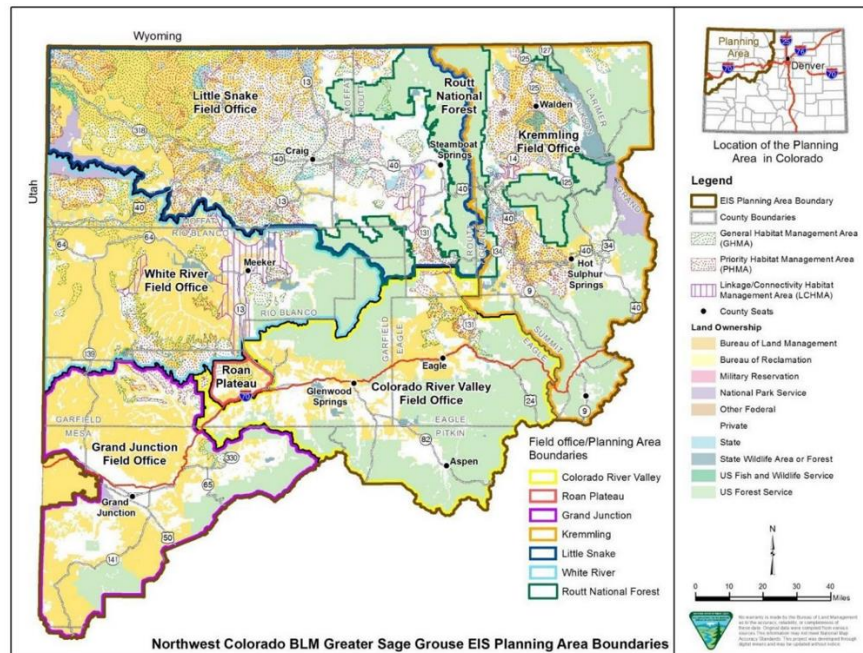


Figure 1: Source: BLM, Supplemental Environmental Impact Statement, Greater Sage Grouse 2020, accessed [02/10/22](#)

Garfield County, CO Just Expanded Protected Sage Grouse Habitat To Prepare For Changes From The Bureau Of Land Management.

Garfield County Expanded Sage Grouse Protection In A New Conservation Plan Released November 2021. “Garfield County last month also amended its own Greater Sage-Grouse Conservation Plan, expanding the habitat map and reflecting new factors impacting bird populations in the county, according to a county news release at the time. The changes were based on input from Colorado Parks and Wildlife and the BLM. About 77% of the bird’s habitat in Garfield County involves privately owned land. The new maps, which had already been adopted by CPW and the federal government, cover 89,743 acres of priority habitat and 95,772 acres of general habitat, providing more protection for the bird than in prior maps, the release stated.” [Post Independent, [12/13/21](#)]

Garfield County’s Updated Conservation Plan Came Ahead Of Changes To The Bureau Of Land Management’s Resources Management Plan To Protect Sage Grouse. “A recent revision to Garfield County’s Greater Sage-Grouse Conservation Plan was just one step in the county’s ongoing efforts to stay ahead of any changes in federal policy that might be on the horizon. The Board of County Commissioners on Monday authorized a letter to U.S. Bureau of Land Management officials requesting that the county be

allowed to participate as a cooperating agency as the BLM looks to amend its Resource Management Plan to protect the bird.” [Post Independent, [12/13/21](#)]

Most Of The Land In Garfield County’s 2013 Sage Grouse Conservation Plan Contained “Significant Oil And Gas Resources.”

Most Of The Land Within The Area Of Garfield County’s Sage Grouse Conservation Plan Contains “Significant Oil And Gas Resources That Are Actively Being Developed Or Are Intended For Future Development.” “The land located within the Plan Area is primarily held in private ownership with the Bureau of Land Management (BLM) representing the only public land. Coincidentally, most of the public lands and private property in this area contain significant oil and gas resources that are actively being developed or are intended for future development.” [Garfield County, Greater Sage-Grouse Conservation Plan, [03/18/13](#)]

Rep. Boebert’s Husband Works For Terra Energy Partners, An Oil And Gas Company With Extensive Operations In Sage Grouse Country.

Lauren Boebert’s Husband, Jayson, Has Worked With Terra Energy Partners Since 2017, Raking In Nearly \$1M Over Just Two Years From The Oil And Gas Company.

From 2019 To 2020, Rep Lauren Boebert’s Husband, Jayson, Was Paid Close To \$1M For Consulting Services By Terra Energy Partners. “Lauren Boebert’s financial disclosure reported that Jayson was paid \$478,386 in 2020 for “consulting services” by Terra Energy Partners — mistakenly reported as Terra Energy Production in the disclosure — and \$460,601 in 2019.” [Colorado Sun, [08/20/21](#)]

Jayson Boebert Has Provided Contract Drilling Services To Terra Energy Partners Since 2017. “Stout said Jayson “is not an employee of Terra Energy” but that he has provided contract drilling services to Terra since 2017.” [Colorado Sun, [08/20/21](#)]

Terra Energy Has “Extensive Lease Holdings” In Garfield County And Rio Blanco County, CO.

Terra Energy Partners Has “Extensive Lease Holdings In Garfield And Rio Blanco Counties” In Colorado. “Shawn Brennan, manager of environment, health and safety for Terra Energy Partners, which has extensive lease holdings in Garfield and Rio Blanco counties, is hopeful about what the new plan might mean for oil and gas companies.” [The Grand Sentinel, [06/08/18](#)]

TEP Rocky Mountain Has 5,483 Active Wells In Garfield County, CO. [COGCC, Daily Activity Dashboard, accessed [02/10/22](#)]

TEP Rocky Mountain Has 388 Active Wells In Rio Blanco County, CO. [COGCC, Daily Activity Dashboard, accessed [02/10/22](#)]

- **Terra Energy Partners Owns TEP Rocky Mountain.** “The Post reports that Boebert actually works as a contractor overseeing drilling operations for the Houston-based firm Terra Energy Partners, which operates various subsidiaries in Colorado, including TEP Rocky Mountain LLC and Terra Energy Holdings LLC.” [Salon, [08/24/21](#)]

Terra Energy Has 338 Leases From The BLM In The Heart Of Sage Grouse Habitats.

TEP Rocky Mountain Has 338 Leases From The Bureau Of Land Management In Rio Blanco And Garfield Counties.

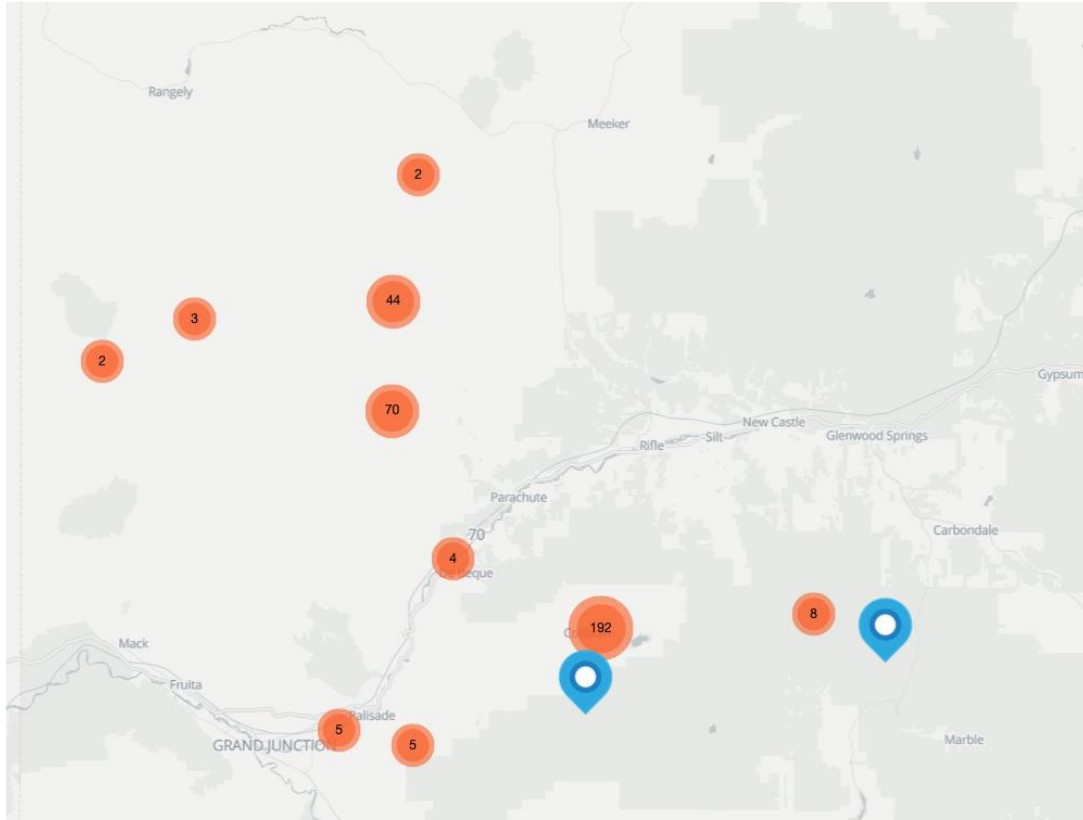


Figure 2: Source: *The Drillings*, accessed [02/10/22](#)

- **In 2018, TEP Was Approved For A 63-Well Project In Garfield County, CO.** “Phase 2 of the Balzac Gulch Master Development Plan (BG2MDP) is an oil and gas exploration and development program proposed by TEP Rocky Mountain LLC (Terra) over an approximate period of 2 to 3 years. The project area is located 9 miles west of Rifle, Colorado, and immediately north of Rulison, Colorado, on the north side of Interstate 70 in central Garfield County (see Project Overview Map). The BG2MDP involves 63 new Federal directional wells on four new wells pads, with bottomhole targets in Federal lease COC73094, an undeveloped lease analyzed in the Record of Decision and approved Resource Management Plan Amendment for BLM’s Roan Plateau Planning Area (decision dated November 14, 2016). If approved, the 63 new wells would produce nearly 120 billion cubic feet (bcf) of natural gas over the projects estimated 40-year life.” [BLM, National NEPA Register, [09/05/18](#)]

Terra Energy Partners Owns 120 Wells North Of Parachute, CO And In Between Meeker And Rangely, CO.

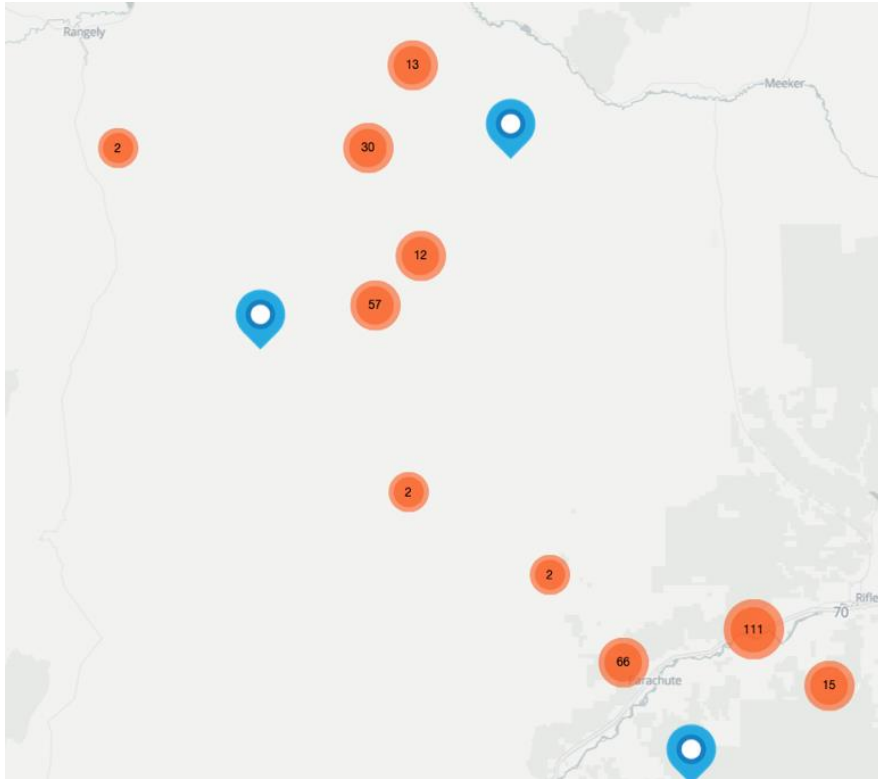


Figure 3: Source: *The Drillings*, accessed [02/10/22](#)

Large Swaths Of Land North Of Parachute And Between Rangely And Meeker, CO Are Considered Priority Areas For Conservation For Sage Grouse.

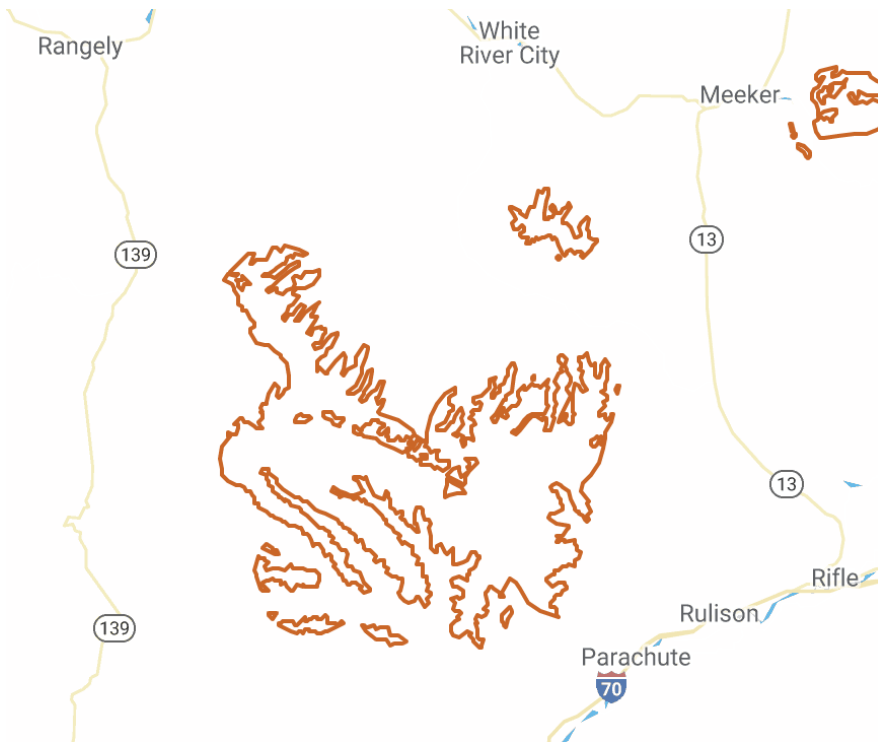


Figure 4: Source: *Sage Grouse Initiative*, accessed [02/10/22](#)

Sage Grouse Populations Include Even More Of That Land According To The US Fish And Wildlife Service.

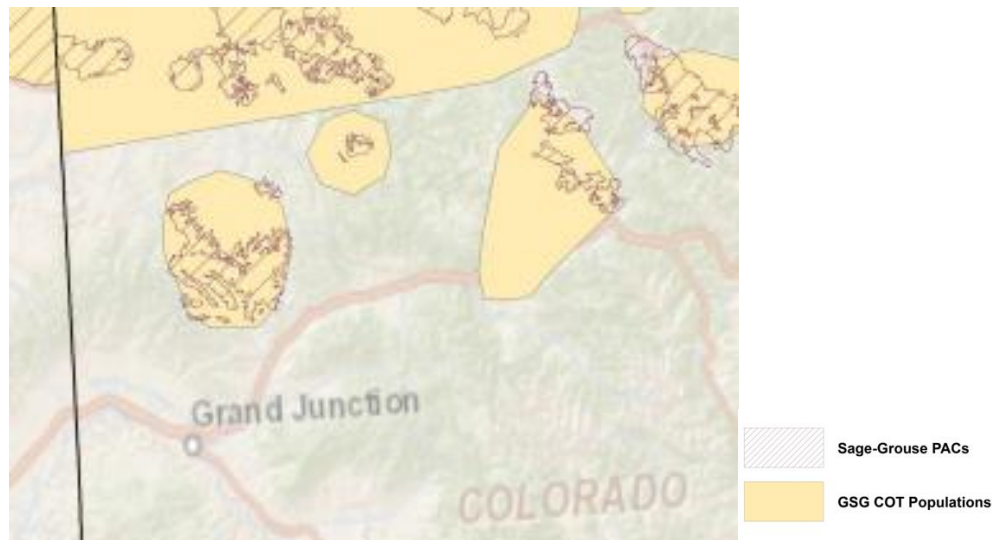


Figure 5: Source: US Fish & Wildlife Services, accessed [02/10/22](#)

Terra Energy Partners Praised The Trump Administration Rollback Of Sage Grouse Habitat Protections For Allowing More Oil And Gas Activity.

Trump Administration Changes To The BLM's Sage Grouse Management Plan In Colorado Would Allow Oil And Gas Leasing Within A Mile Of Active Sage Grouse Mating Grounds. "A chief change being proposed in Colorado is that oil and gas leasing would be allowed within a mile of active leks, the bird's mating grounds. That would open 224,200 acres to leasing that are now closed. However, such leases would be subject to no-surface-occupancy restrictions on drilling and other operations, as is now the case for more than 900,000 acres in the state identified as priority habitat." [*The Grand Sentinel*, [06/08/18](#)]

Terra Energy Partners Praised Changes To Colorado's Sage Grouse Management For Providing More Flexibility For Oil And Gas Producers. "The Bureau of Land Management in May released draft resource management plan amendments and environmental impact statements governing greater sage-grouse management in Colorado and several other states. [...] "It looks more flexible to me, not having gone through all the details," Brennan said. He said that for the plan's wording to suggest greater flexibility is the first step. "The next step is, in practice is (flexibility) really there?" he said." [*The Grand Sentinel*, [06/08/18](#)]